

PART OF NE 1/4, SEC. 32, T.7N., R.2W., S.L.B. & M.

PLAIN CITY  
BLOCK 14, PLAT A

TAXING UNIT: 21

SCALE 1" = 50'

SEE PAGE 41

17

2575

NORTH

STREET

S 89°17' E

WEST STREET

WEST STREET

SEE PAGE 39

15

WEST STREET

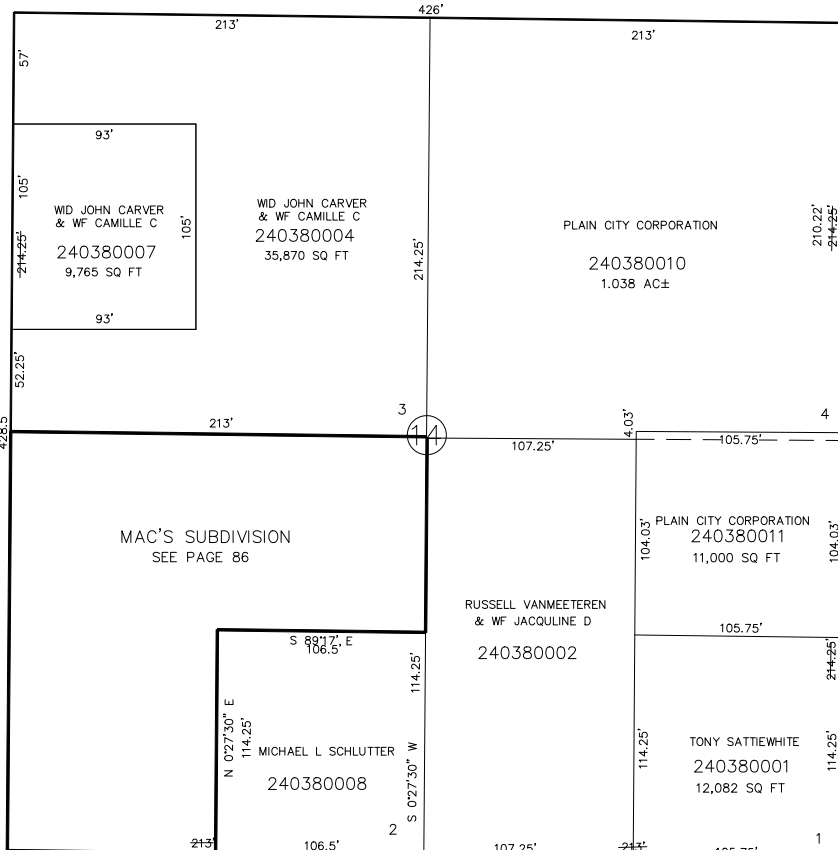
N 0°27'30" E

N 0°27'30" E

SEE PAGE 37

13

WEST STREET



11

SEE PAGE 35

SEE ORIGINAL DEDICATION  
PLAT OF PLAIN CITY IN  
BOOK 5, PAGE 80 OF RECORDS.